

# Helpman THORD 428-7-HH2/5-E4 E

## Specifications

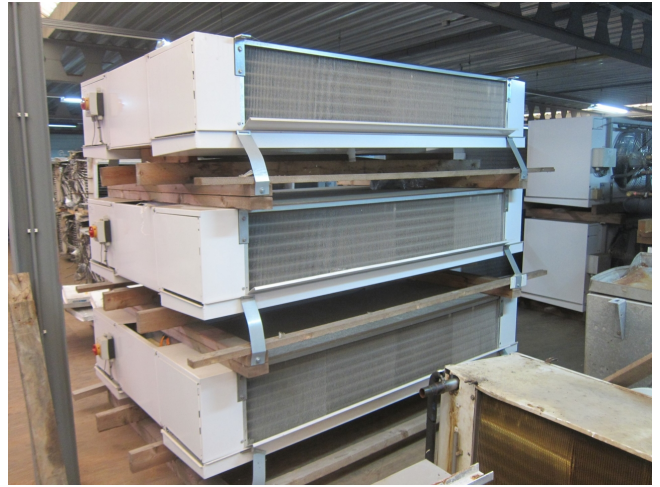
Hersteller	Helpman
Typ	THORD 428-7-HH2/5-E4 E
Kälteleistung kW	32,3
Kältemittel	Freon
Anzahl der Ventilatoren	2
Ventilator Durchmesser in mm	7
Abtauung	Electric
Beidseitig ausblasend	✓
Luftdurchsatz in m <sup>3</sup> /h	16000
Größe	2450x1730x485 mm (LxWxH)
Bemerkungen	y.o.b. 2007 (BRANDNEW!!) // Fan: 0,37 kW / 1440 RPM / Ø = 500 mm
Stock	3

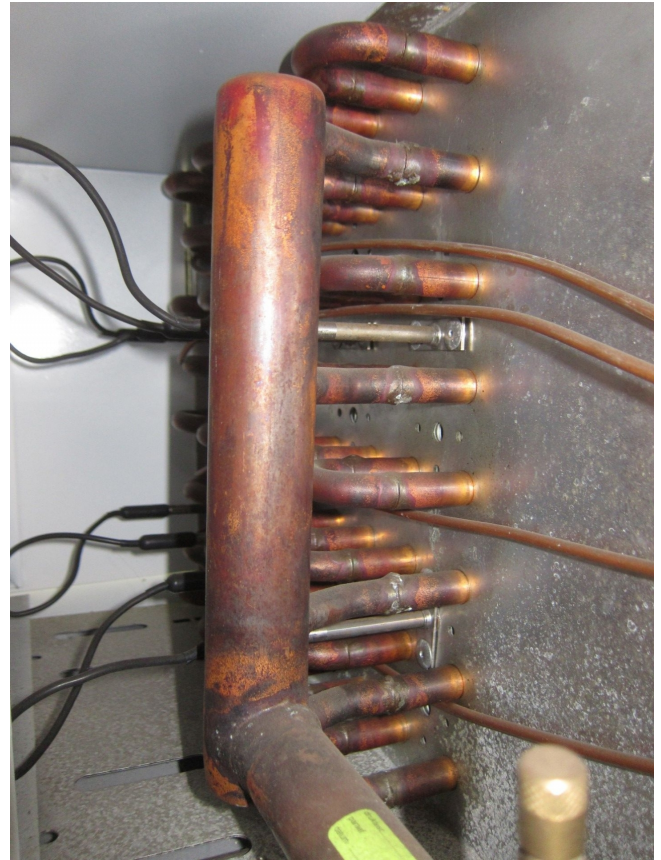


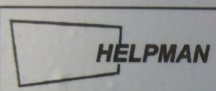
## Description

### Used Helpman THORD 428-7-HH2/5-E4 E

y.o.b. 2007 (BRANDNEW!!) // Fan: 0,37  
kW / 1440 RPM / Ø = 500 mm / 16000  
m<sup>3</sup>/h





 <b>Apparatenfabriek Helpman BV</b> Peizerweg 97, 9727 AJ Groningen (NL) Tel. ++31 50 5217555 / Fax ++31 50 5264878 info@helpman.com / www.helpman.com			
Type	THORD 428-7-HH2/5-E4-230V		
Serial number	563374-170055-80639-02		
Refrigerant	R22/R134a/R404A/R401B/R407C/R417A/R507A		
Design temp (TS)	-55/63	°C min/max	Voltage 230/50/1
Design pressure (PS)	-1/33	bar min/max	Year 2007
Total internal volume	59	l	
Weight (empty)	264	kg	

Design pressure (PS)		-1/33		bar min/max		Year		2007	
Total internal volume		59		l					
Weight (empty)		264		kg					

Instelwaarden van de thermische beveiliging		50 Hz		°C		230 / 50 / 1			
Einstelwerte für motorschutzschalter		Adjustment values for overload relays		Valeurs pour la selection du relais de protection					
						30 W		70 W	
						0		0.5	
						-20		0.6	
						-40		0.6	

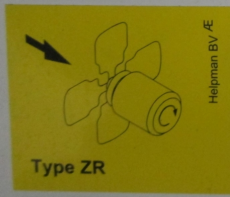
  

						230 / 400 / 50 / 3			
30 W		90 W		250 W		370 W		550 W	
Δ 230		Υ 400		Δ 230		Υ 400		Δ 230	
Υ 400		Δ 230		Υ 400		Δ 230		Υ 400	
0		0.5		0.9		1.1		1.4	
-20		0.5		0.9		1.1		1.4	
-40		0.5		0.9		1.1		1.4	


  

						370/60 W n=1440/710			
Δ 230		Υ 400		Δ 230		Υ 400		Υ 400	
0		0.5		0.9		1.1		1.4	
-20		0.5		0.9		1.1		1.4	
-40		0.5		0.9		1.1		1.4	



Type ZR



**EUROVENT**  
CERTIFIED PERFORMANCE

**CERTIFY-ALL**

DX Unit Air Coolers  
Aircooled Condensers  
Dry Coolers

